

Grace Below Grade Waterproofing

PREPRUFE® 200

Fast, simple, pre-applied waterproofing membrane and vapor barrier that bonds to poured concrete for use below slabs or behind basement walls on confined sites

Description

Preprufe® 200 Membrane is a composite sheet comprising a thick HDPE film, an aggressive pressure sensitive adhesive and a weather resistant protective coating.

Using patented Advanced Bond Technology, Preprufe 200 Membrane provides a continuous seal that resists water ingress and migration between the membrane and the structure.

The Preprufe 200 System includes—

- **Preprufe 200 Membrane**—robust membrane for horizontal use below concrete slabs or vertically against soil retention systems.
- **Preprufe CJ Tape LT**—self-adhesive 8 in. (200 mm) wide strip applied to the surface of the membrane along the line of all concrete joints (application temperature range 25°F to 86°F (-4°C to +30°C)).
- **Preprufe CJ Tape HC**—as above for use in hot climates (minimum 50°F (10°C)).
- **Bituthene® Liquid Membrane**—for sealing around penetrations, etc.

Preprufe 200 Membrane is applied either horizontally to smooth prepared concrete, well-rolled and compacted sand, or compacted crushed stone blinding; or vertically to permanent formwork or adjoining structures. Concrete is then cast directly against the adhesive side of the membranes. The specially developed Preprufe adhesive layers work together to form a continuous and integral seal to the poured concrete.

Advantages

- **Prevents water migration**—Preprufe's Advanced Bond Technology™ forms a unique integral seal to concrete poured against it
- **Fast and easy installation**—loose laid, mechanically fastened laps
- **Avoids delays**—unaffected by wet or cold conditions, can even be laid during rain
- **Excellent vapor barrier**—typical MVER 0.11 lb/1000 ft²/24 hr ASTM F1869-98

- **Inherently waterproof, non-reactive system**—
 - Cannot activate prematurely or be washed away
 - Not reliant on confining pressures or hydration
 - Unaffected by freeze/thaw, wet/dry cycling
- **Chemical resistant**—effective in all types of soils and waters, protects structure from salt or sulphate attack
- **Self protecting**—ready for immediate placement of reinforcing steel and concrete without costly protective layers

Applications

Typical applications include garages, plant rooms, utility grade basements, tunnels; vapor barrier for ground bearing floor slabs with moisture sensitive finishes, e.g. schools, hospitals, wood flooring, etc.

For more critical waterproofing applications consider Preprufe 300R. See separate data sheet.

Limitations

Preprufe 200 Membrane is intended for low, medium or intermittent water pressures.

Preprufe 200 Membrane can be returned up the inside face of slab formwork but is not recommended for conventional twin-sided formwork on walls, etc. Use Bituthene self-adhesive membrane or Procor® fluid applied membrane to walls after removal of formwork for a fully-bonded system to all structural surfaces.

Use

Preprufe 200 Membrane is supplied in rolls 4 ft (1.2 m) wide, interwound with a disposable plastic release liner which must be removed before placing reinforcement and concrete.

Substrate Preparation

All surfaces—It is essential to create a sound and solid substrate to eliminate movement during the concrete pour. Substrates must be regular and smooth, with no gaps or voids greater than 0.5 in. (12 mm). Grout around all penetrations such as utility conduits, etc. for stability.

Horizontal—The substrate must be free of loose aggregate and sharp protrusions. An angular profiled blinding is recommended rather than a sloping or rounded substrate. The surface does not need to be dry but standing water must be removed.

Vertical—Use concrete, plywood, insulation or other approved facing to sheet piling to provide support to the membrane. Board systems such as timber lagging must be close butted to provide support and not more than 0.5 in. (12 mm) out of alignment.

Membrane Installation

Preprufe 200 Membrane can be applied at temperatures of 25°F (-4°C) or above. Membrane installation is unaffected by wet weather.

Horizontal substrates—Place the membrane HDPE film side to the substrate with printed coated side up facing towards the concrete pour. End laps should be staggered to avoid a build up of layers.

Accurately position succeeding sheets to overlap the previous sheet 3 in. (75 mm) along the marked lap line. Completely remove the plastic liner to expose the protective coating. Any initial tack will quickly disappear.

Lap fastening—To prevent the membrane from moving and gaps opening, the laps should be fastened together at maximum 39 in. (1.0 m) on-center. Fix through the center of the lap area using 0.5 in. (12 mm) long washer-head self-tapping screws, or similar, allowing the head of the screw to bed into the adhesive compound to self seal. It is not necessary to fix the membrane to the substrate, only to itself. Ensure the membrane lays flat and no openings occur. Additional fastening may be required at corners, details etc.

Galvanized fasteners are suitable for most applications. Stainless steel or other non-corrosive fasteners are recommended for aggressive soil conditions containing chloride or sulphate.

Alternatively, 3 in. (75 mm) strips of Preprufe Tape may be used 39 in. (1.0 m) on center to prevent gaps or movement. Or, Preprufe Tape may be used to seal the entire length of the overlap. Apply tape centrally over lap and roll firmly. Remove plastic liner.

Vertical substrates—Mechanically fasten the membrane vertically using fasteners appropriate to the substrate with the printed coated side facing towards the concrete pour. The membrane may be installed in any convenient length. Secure the top of the membrane using a batten such as a termination bar or similar 2 in. (50 mm) below the top edge. Fastening should be made through the overlap area at 20 in. (0.5 m) maximum on-center so that the membrane lays flat without fishmouths. Immediately remove the plastic release liner.

Roll ends and cut edges—Overlap all roll ends and cut edges by a minimum 3 in. (75 mm) and fasten as above.

Penetrations

Use the following steps to seal around penetrations such as service pipes, piles, lightning conductors, etc.

Grout around the penetration if the penetration is not stable. Fit the membrane tight to the penetration. If the membrane is not within 0.5 in. (12 mm) of the penetration, apply Preprufe Tape to cover the gap.

Wrap the penetration with Preprufe Tape by positioning the tape 0.5 in. (12 mm) above the membrane.

Apply Bituthene Liquid Membrane around the penetrations using a fillet to provide a watertight seal between the Preprufe membrane and Preprufe Tape.

Membrane Repair

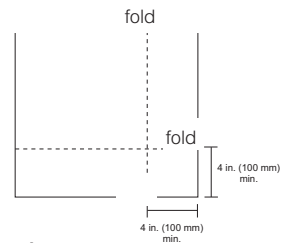
Inspect the membrane before installation of reinforcement steel, formwork and final placement of concrete. The membrane can be easily cleaned by power washing with water if necessary.

Repair damage by placing a patch of Preprufe 200 Membrane over the damaged area ensuring a minimum 3 in. (75 mm) overlap. Secure the patch using screw fasteners as above.

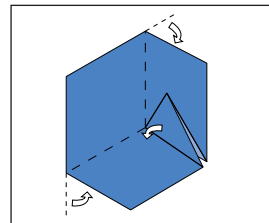
Any areas of damaged adhesive should be covered with Preprufe Tape. Remove printed plastic liner from tape.

Corners

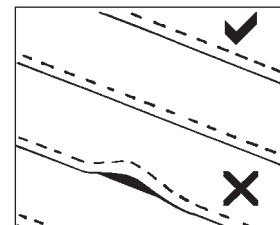
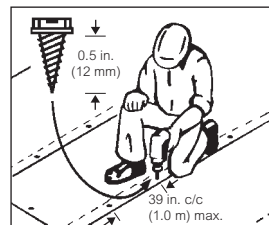
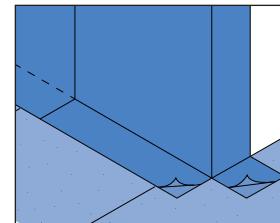
Internal and external corners should be formed as shown in the diagrams returning the membrane a minimum of 4 in. (100 mm). Crease and fold the membrane to ensure a close fit to the substrate profile and avoid gaps. Fasten using screw fasteners.



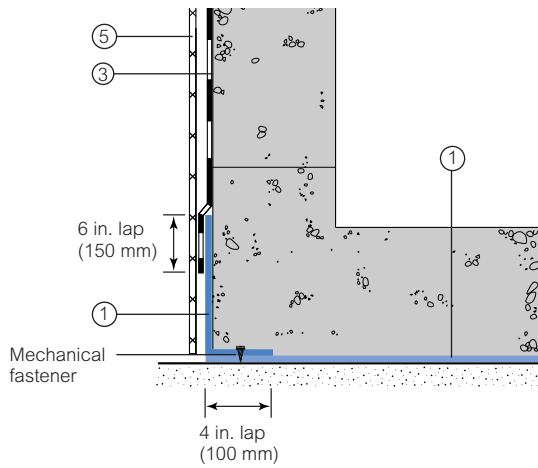
Internal



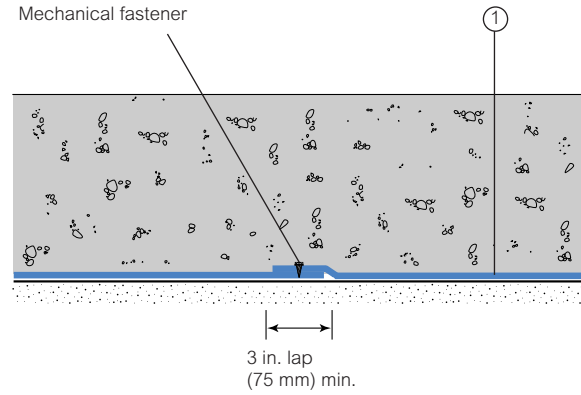
External



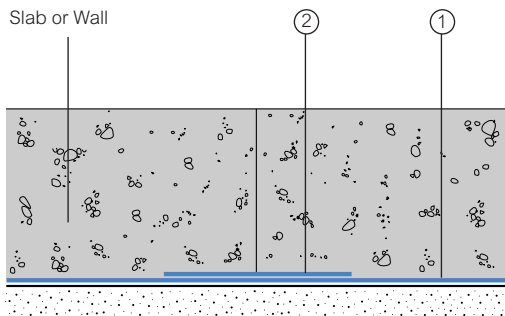
Wall base detail



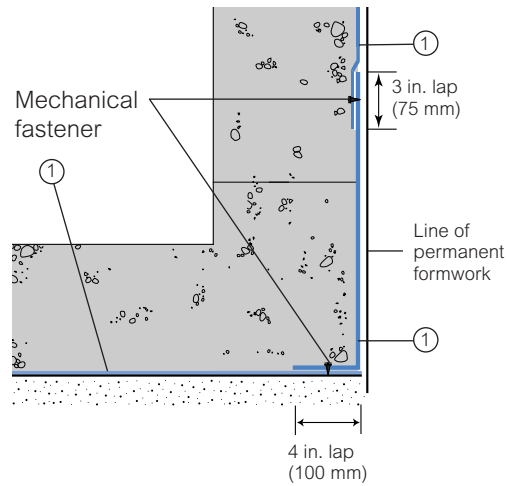
Side/end lap detail



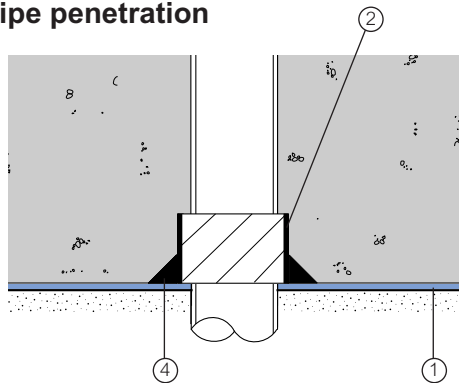
Concrete joint



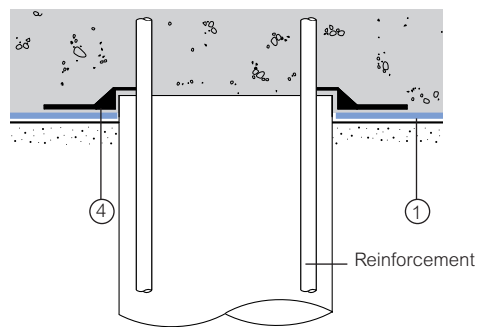
Wall base detail against permanent shutter



Pipe penetration



Pile detail



1 Preprufe 200 Membrane

2 Preprufe CJ Tape

3 Procor® (use Preprufe Tape to tie-in) or Bituthene® 4000

4 Bituthene Liquid Membrane

5 Hydroduct®

Details shown are typical illustrations and not working details. For assistance with detailing and problem solving please contact Grace Technical Department at 866-333-3SBM (3726).

Supply

Dimensions (Nominal)	Preprufe 200 Membrane	Preprufe CJ Tape (LT or HC*)	Preprufe Tape (LT or HC*)
Thickness	0.032 in. (0.8 mm)		
Roll size	4 ft x 115 ft (1.2 m x 35 m)	8 in. x 49 ft (200 mm x 15 m)	4 in. x 49 ft (100 mm x 15 m)
Roll area	460 ft ² (42 m ²)		
Roll weight	92 lbs (42 kg)	8.6 lbs (4 kg)	4.3 lbs (2 kg)
Minimum side/end laps	3 in. (75 mm)	3 in. (75 mm)	3 in. (75 mm)
* LT denotes Low Temperature (between 25°F and 86°F), HC denotes Hot Climate (>50°F)			
Ancillary Products			
Bituthene Liquid Membrane (LM) 1.5 gal (5.7 liter)			
Screw Fasteners (by others)			
Self Tapping Washer Head Screws 0.5 in. (12 mm) long, galvanized or stainless steel as appropriate			

Physical Properties

Property	Typical Value	Test Method
Color	White	
Film thickness (nominal)	0.020 in. (0.5 mm)	ASTM D3767—method A
Low temperature flexibility	Unaffected at -10°F (-23°C)	ASTM D1970
Elongation	300% min.	ASTM D412 modified ¹
Crack cycling at -10°F (-23°C)	Pass	ASTM C836
Tensile strength, film	4000 psi (27.6 MPa) min.	ASTM D412
Peel adhesion to concrete	5.0 lbs/in. (880 N/m) min.	ASTM D903 modified ²
Resistance to hydrostatic head	30 ft (10 m)	ASTM D5385 modified ³
Puncture resistance	135 lbs (600 N) min.	ASTM E154
Permeance	0,01 perms (0.6 ng/m ² Pa)	ASTM E96—method B
Water absorption	0.5% maximum	ASTM D570
Moisture vapor emission rate	0.11 lb/1000 ft ² /24 hr	ASTM F1869-98 modified

Footnotes:

1. Elongation of membrane is run at 2 in. (50 mm) per minute.
2. Concrete is cast against the protective coating surface of the membrane and allowed to properly cure (7 days min.). Peel adhesion of membrane to concrete is measured at a rate of 2 in. (50 mm) per minute at room temperature.
3. Hydrostatic tests are performed by casting concrete against the membrane with a lap across a 0.040 in. (1 mm) formed crack.

Pouring of Concrete

Ensure the plastic release liner is removed from all areas of Preprufe 200 Membrane and Tape.

It is recommended that concrete be poured within 56 days (42 days in hot climates) of application of the membrane. Concrete must be placed and compacted carefully to avoid damage to the membrane. Never use a sharp object to consolidate the concrete.

Removal of Formwork

Preprufe 200 Membrane can be applied to removable formwork, such as slab perimeters, elevator and lift pits, etc. Once the concrete is poured the formwork must remain in place until the concrete has gained sufficient compressive strength to

develop the surface bond. Preprufe 200 Membrane is not recommended for conventional twin-sided wall forming systems.

A minimum concrete compressive strength of 1500 psi (10 N/mm²) is recommended prior to stripping formwork supporting Preprufe 200 Membrane. Premature stripping may result in displacement of the membrane and/or spalling of the concrete.

As a guide, to reach the minimum compressive strength stated above, a structural concrete mix with an ultimate strength of 6000 psi (40 N/mm²) will typically require a cure time of approximately 6 days at an average ambient temperature of 25°F (-4°C), or 2 days at 70°F (21°C).

www.graceconstruction.com

For technical assistance call toll free at 866-333-3SBM (3726)

Preprufe, Bituthene and Hydroduct are registered trademarks of W. R. Grace & Co.—Conn. Procor is a U.S. registered trademark of W. R. Grace & Co.—Conn., and is used in Canada under license from PROCOR LIMITED.

We hope the information here will be helpful. It is based on data and knowledge considered to be true and accurate and is offered for the users' consideration, investigation and verification, but we do not warrant the results to be obtained. Please read all statements, recommendations or suggestions in conjunction with our conditions of sale, which apply to all goods supplied by us. No statement, recommendation or suggestion is intended for any use which would infringe any patent or copyright. W. R. Grace & Co.—Conn., 62 Whittemore Avenue, Cambridge, MA 02140. In Canada, Grace Canada, Inc., 294 Clements Road, West, Ajax, Ontario, Canada L1S 3C6.

This product may be covered by patents or patents pending.
PF-155E Printed in U.S.A. 7/07

Copyright 2007. W. R. Grace & Co.—Conn.
FA/LI/1M

GRACE